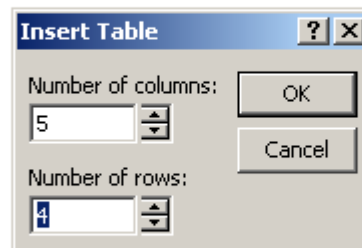


Create an "Interactive Jeopardy Game Board" using Microsoft PowerPoint in 10 Easy Steps!

Tip: Review these instructions while viewing the sample PowerPoint file included on the resource CD-ROM.

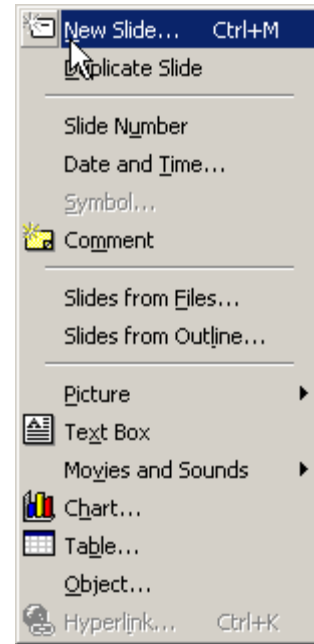
1. Open a new PowerPoint Presentation.
2. To create the Game Board:
Click "Insert Table" and construct your game board with titles of your categories and points for questions/categories.



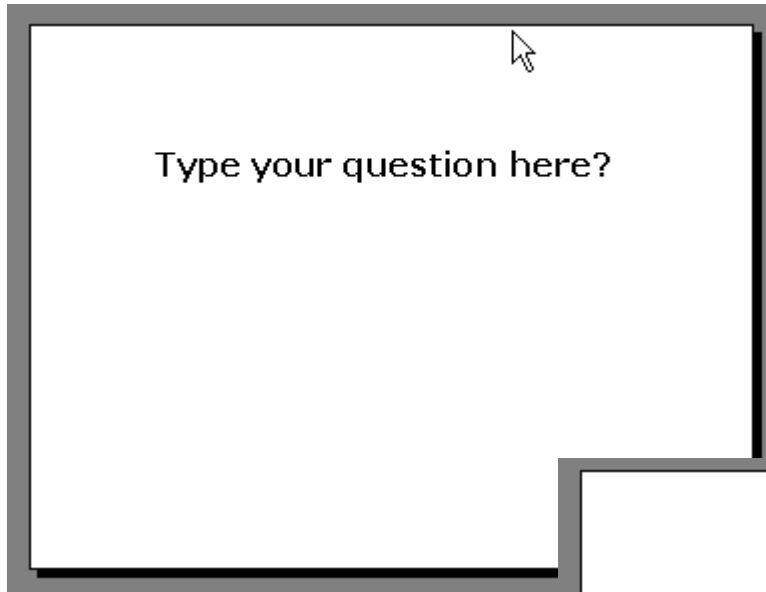
Tip: Create a categories and "question slide" grid on paper before building your game board and Question Slides in PowerPoint. A planning sheet is included with these instructions (on the last page).

3. Create a new slide for Question 1.
(Under the "Insert" Menu - A)

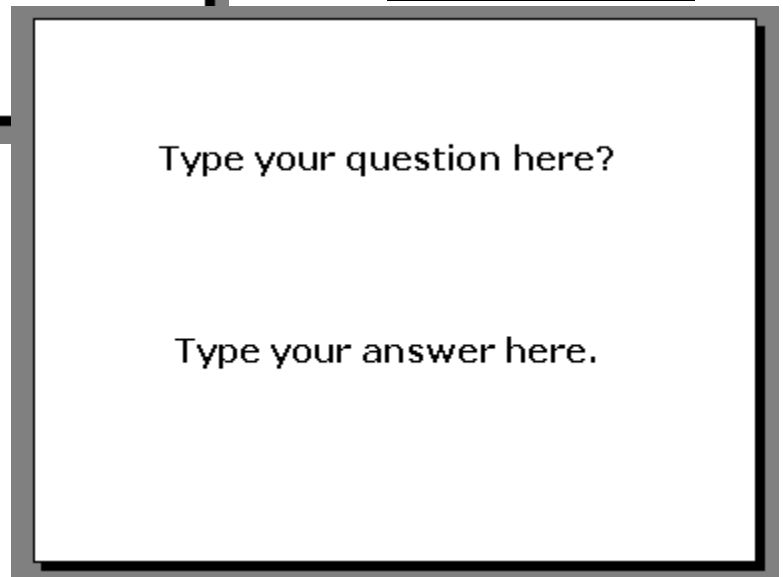
A.



B.

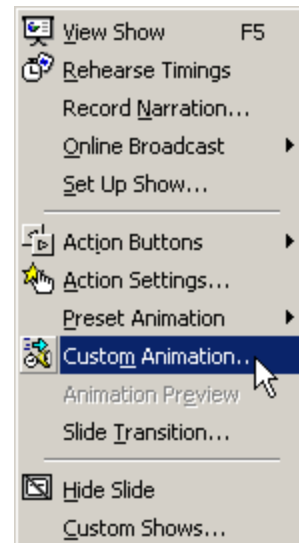


C.

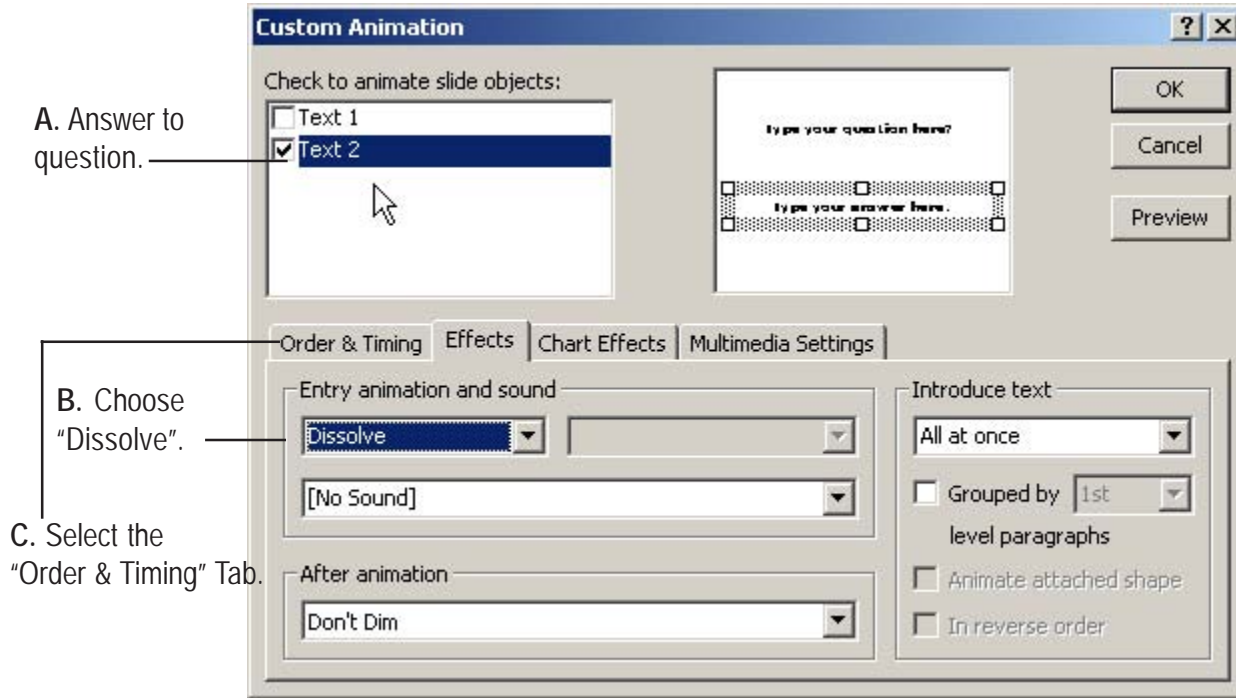


B-C. Type your question and answer for Category 1, Value 100.

4. Go to the "Slide Show" Menu and select "Custom Animation."

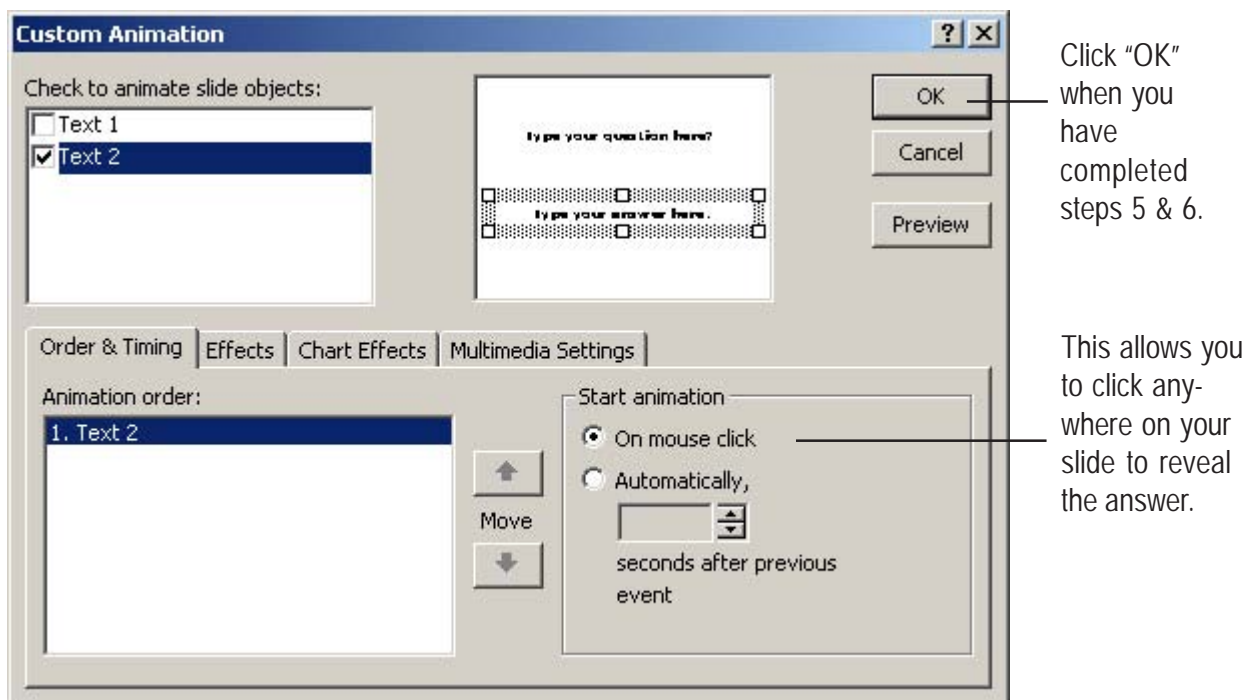


5. From the "Custom Animation" window, select the "Text" check box that represents the answer to your question, and select the "Dissolve" animation. (See A & B) From this window, select the "Order & Timing" Tab. (See C)

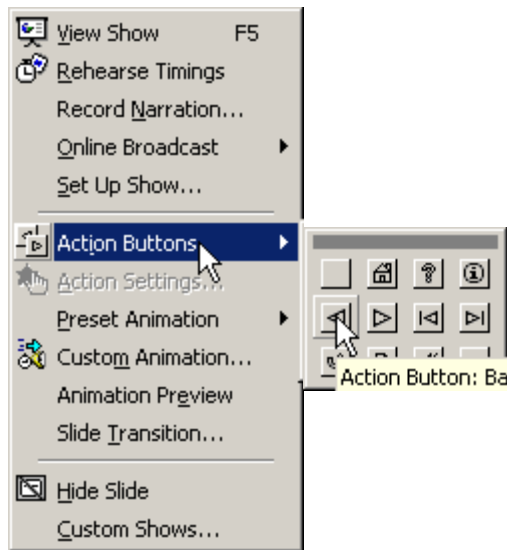


6. From the "Order & Timing" Tab (within the Custom Animation Window), select "On Mouse Click."

NOTE: This is how you will reveal the answer to the question.



7. To be able to return to your main Game Board, you must insert an "Action Button." Go to the "Slide Show" Menu and select "Action Buttons."



Select the "Action Button" you need (such as the left pointing arrow indicating "back").

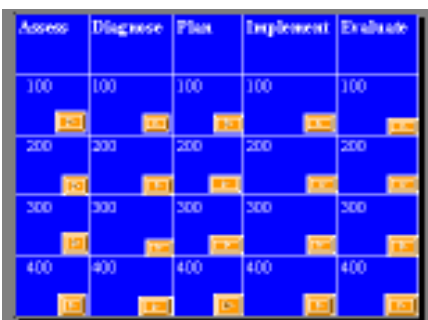
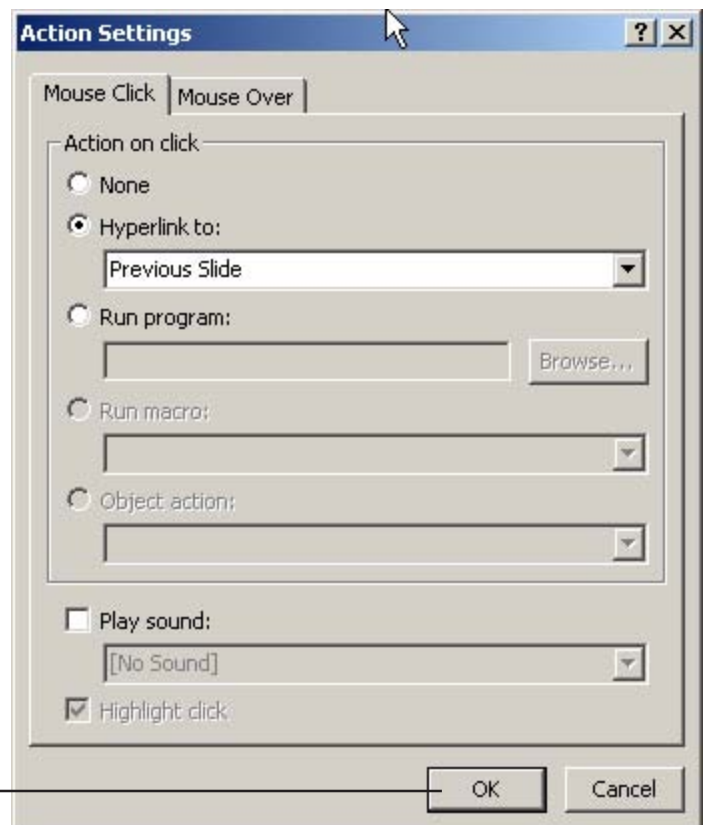
Once you click on the "Action Button" you desire, move your mouse cursor to where you want the action button to appear on the slide, "Click and Drag" the "Action Button" into size and place.

8. A dialogue box opens asking what you want to hyperlink to. Choose "Previous Slide" to create a link back to the Jeopardy Game Board.

9. Return to your "Game Board" Slide and insert an Action Button that links the Category 1, Question 1 Square on the game board to the Question 1 slide.

10. Repeat this process for each Category and Value Level to complete your game.

Click "OK."



Interactive Jeopardy Planning Page

Category 1	Category 2	Category 3	Category 4	Category 5
Category 1 - 100	Category 2 - 100	Category 3 - 100	Category 4 - 100	Category 5 - 100
Category 1 - 200	Category 2 - 200	Category 3 - 200	Category 4 - 200	Category 5 - 200
Category 1 - 300	Category 2 - 300	Category 3 - 300	Category 4 - 300	Category 5 - 300
Category 1 - 400	Category 2 - 400	Category 3 - 400	Category 4 - 400	Category 5 - 400